



Morecambe Offshore Windfarm: Generation Assets Environmental Statement

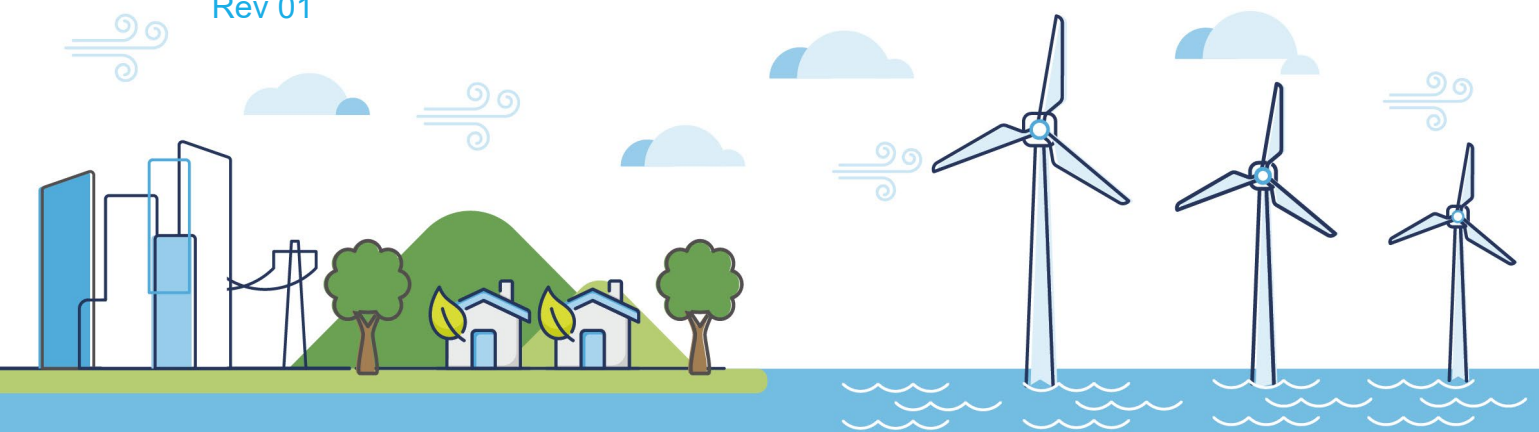
Volume 5

Chapter 18 SLVIA Figures (Part 10 of 34)

PINS Document Reference: 5.3.18.10

APFP Regulation: 5(2)(a)

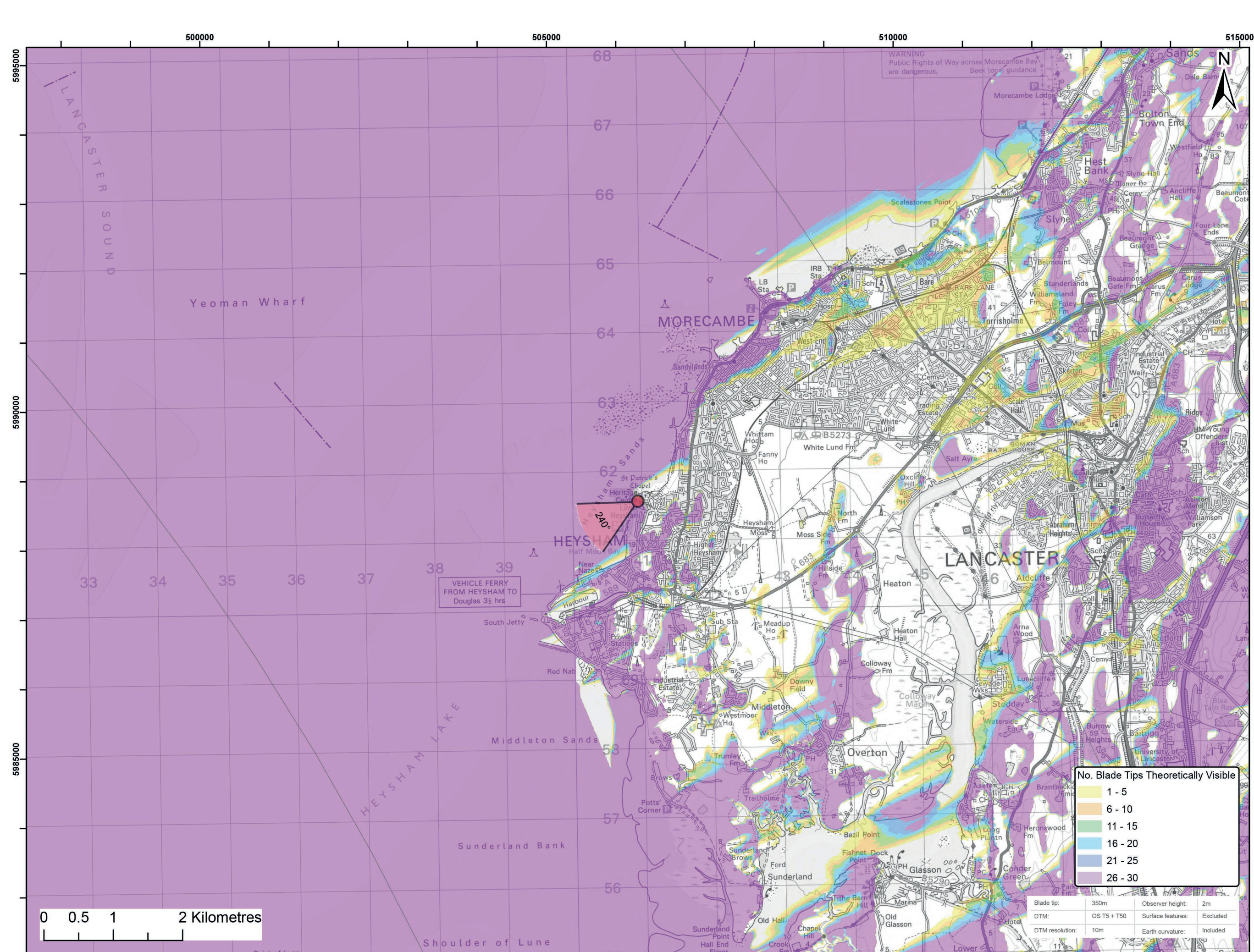
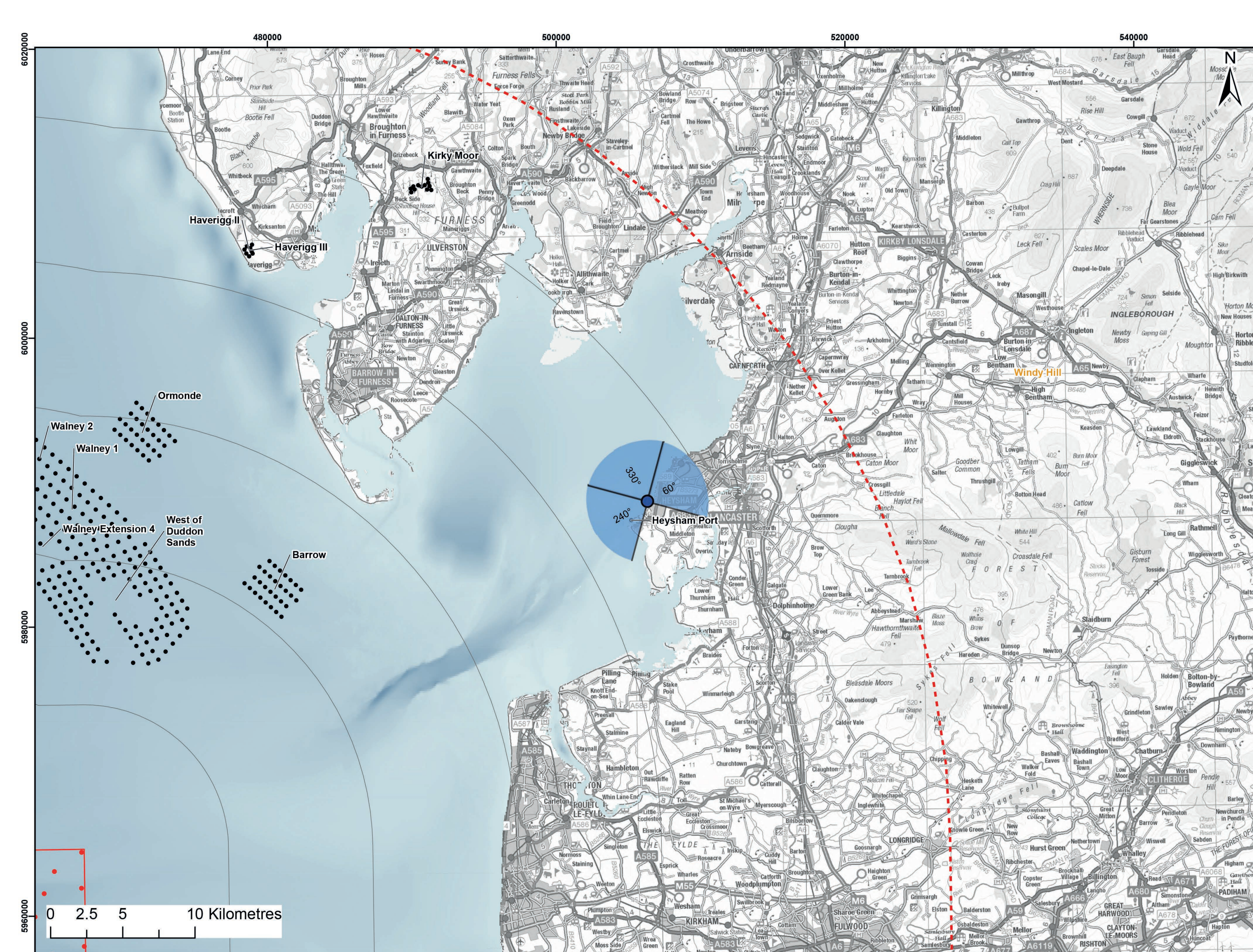
Rev 01



Document History

Doc No	MOR001-FLO-CON-ENV-FIG-1180	Rev	01
Alt Doc No	PC1165-RHD-ES-XX-DG-Z-0018		
Document Status	Approved for Use	Doc Date	May 2024
PINS Doc Ref	5.3.18.10	APFP Ref	5(2)(a)

Rev	Date	Doc Status	Originator	Reviewer	Approver	Modifications
01	May 2024	Approved for Use	Royal HaskoningDHV	Morecambe Offshore Windfarm Ltd	Morecambe Offshore Windfarm Ltd	n/a



Legend:

● Morecambe Offshore Wind Farm - Assumed WTG locations (30 x BT 310m(HAT))	● Cumulative Wind Farms Status
▼ 90 Degree Field of View	● Operational
▼ 53.5 Degree Field of View	● Under Construction
 10km Radii	● Consented
 60km Study Area	● Application
 Morecambe Offshore Windfarm Site	● Scoping
	● Pre-Application

© Crown copyright and database rights (2023) Ordnance Survey 0100031673.

Report:
Morecambe Offshore Windfarm: Generation Assets Environmental Statement

Title:
Viewpoint 7: Heysham Head

Figure: 18.30a	Drawing No: 211609				
Revision: P02	Date: 25/09/2023	Drawn: RA	Checked: SM	Size: A3	Scale: 1:50,000

Co-ordinate system: WGS 1984 UTM Zone 30N



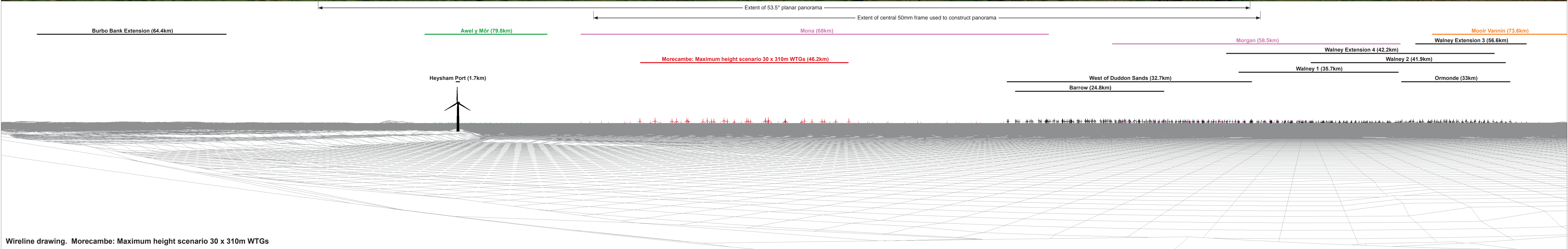
Viewpoint Location Plan Baseline Panorama (90 Degree View)
Scale: 1:200,000

Viewpoint Location Plan (53.5 Degree View)
Scale: 1:50,000



Baseline photograph

This image provides landscape and visual context only



Wireline drawing. Morecambe: Maximum height scenario 30 x 310m WTGs

OS reference:	340939 E 461567 N	Horizontal field of view:	90° (cylindrical projection)	Camera:	Canon EOS 6D
Eye level:	30.74 m AOD	Principal distance:	522 mm	Lens:	EF50mm f/1.4 USM
Direction of view:	240°			Camera height:	1.5 m AGL
Nearest turbine:	46.176 km			Date and time:	19/04/2022, 11:16

Figure: 18:30b
Viewpoint 7: Heysham Head, Chapel Hill The-Barrows



Baseline photograph

This image provides landscape and visual context only



Wireline drawing

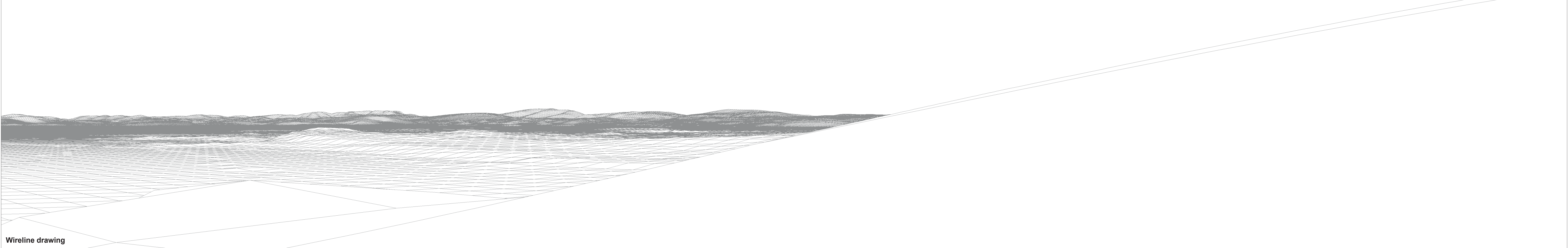
OS reference:	340939 E 461567 N	Horizontal field of view:	90° (cylindrical projection)	Camera:	Canon EOS 6D
Eye level:	30.74 m AOD	Principal distance:	522 mm	Lens:	EF50mm f/1.4 USM
Direction of view:	330°			Camera height:	1.5 m AGL
Nearest turbine:	46.176 km			Date and time:	19/04/2022, 11:16

Figure: 18:30c
Viewpoint 7: Heysham Head, Chapel Hill The-Barrows



Baseline photograph

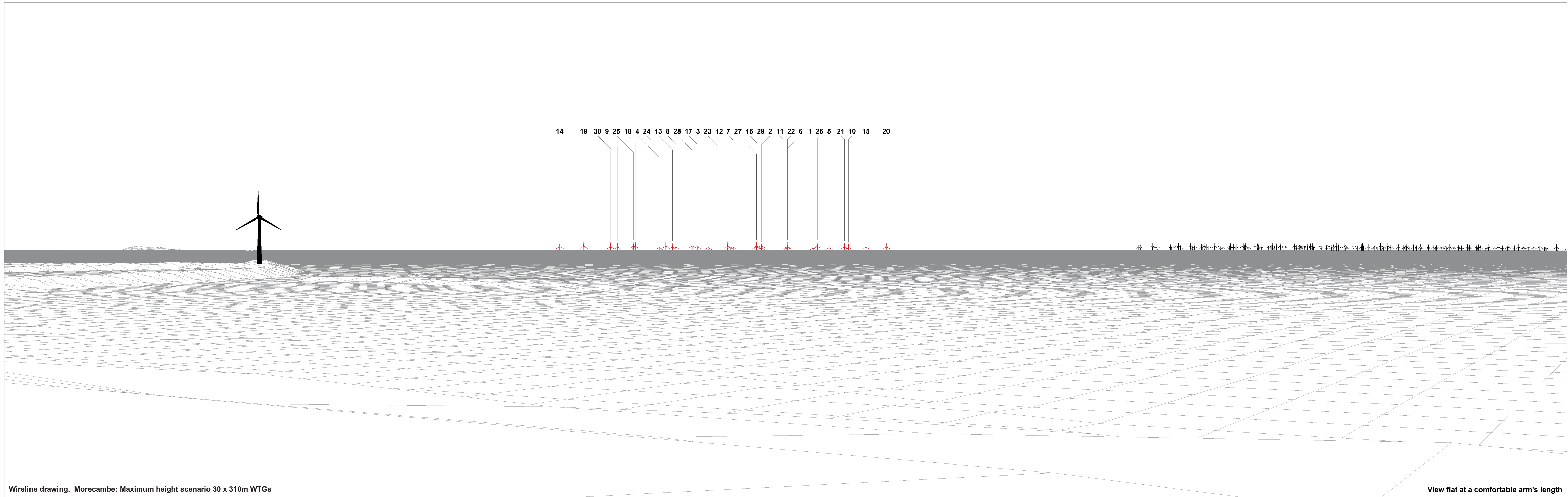
This image provides landscape and visual context only



Wireline drawing

OS reference: 340939 E 461567 N	Horizontal field of view: 90° (cylindrical projection)	Camera: Canon EOS 6D
Eye level: 30.74 m AOD	Principal distance: 522 mm	Lens: EF50mm f/1.4 USM
Direction of view: 60°		Camera height: 1.5 m AGL
Nearest turbine: 46.176 km		Date and time: 19/04/2022, 11:16

Figure: 18:30d
Viewpoint 7: Heysham Head, Chapel Hill The-Barrows



Wireline drawing. Morecambe: Maximum height scenario 30 x 310m WTGs

View flat at a comfortable arm's length

OS reference:	340939 E 461567 N	Horizontal field of view:	53.5° (planar projection)	Camera:	Canon EOS 6D
Eye level:	30.74 m AOD	Principal distance:	812.5 mm	Lens:	EF50mm f/1.4 USM
Direction of view:	240°	Paper size:	841 x 297 mm (half A1)	Camera height:	1.5 m AGL
Nearest turbine:	46.176 km	Correct printed image size:	820 x 260 mm	Date and time:	19/04/2022, 11:16

Figure: 18:30e
Viewpoint 7: Heysham Head, Chapel Hill The-Barrows



Baseline Photograph (offshore operational turbines have been rendered in this view)

View flat at a comfortable arm's length

OS reference: 340939 E 461567 N	Horizontal field of view: 53.5° (planar projection)	Camera: Canon EOS 6D	Figure: 18:30f Viewpoint 7: Heysham Head, Chapel Hill The-Barrows
Eye level: 30.74 m AOD	Principal distance: 812.5 mm	Lens: EF50mm f/1.4 USM	
Direction of view: 240°	Paper size: 841 x 297 mm (half A1)	Camera height: 1.5 m AGL	
Nearest turbine: 46.176 km	Correct printed image size: 820 x 260 mm	Date and time: 19/04/2022, 11:16	



Photomontage

View flat at a comfortable arm's length

OS reference: 340939 E 461567 N	Horizontal field of view: 53.5° (planar projection)	Camera: Canon EOS 6D
Eye level: 30.74 m AOD	Principal distance: 812.5 mm	Lens: EF50mm f/1.4 USM
Direction of view: 240°	Paper size: 841 x 297 mm (half A1)	Camera height: 1.5 m AGL
Nearest turbine: 46.176 km	Correct printed image size: 820 x 260 mm	Date and time: 19/04/2022, 11:16

Figure: 18:30g
Viewpoint 7: Heysham Head, Chapel Hill The-Barrows